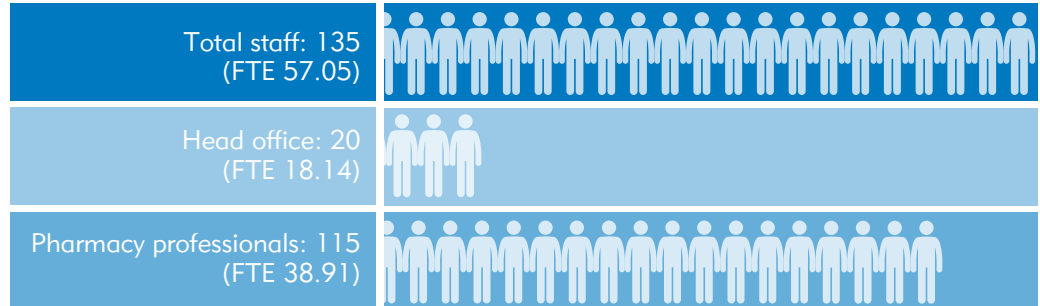


Annual report highlights 2016/2017

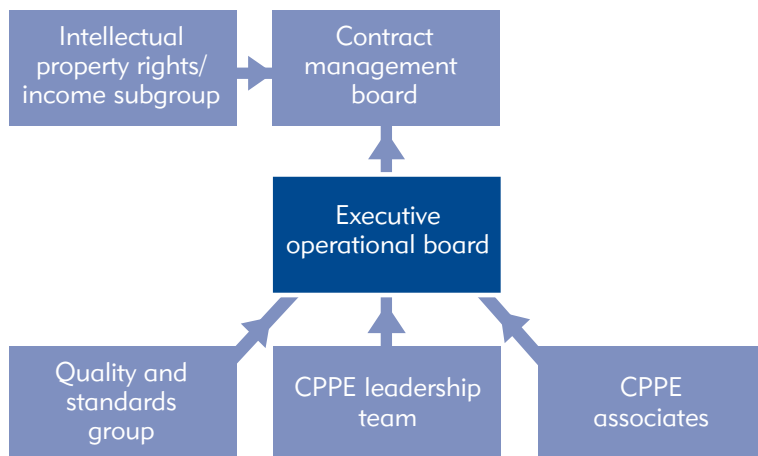
CPPE team

We support nearly **67,000** pharmacists, pharmacy technicians and pre-registration trainee pharmacists with their continuing professional development.

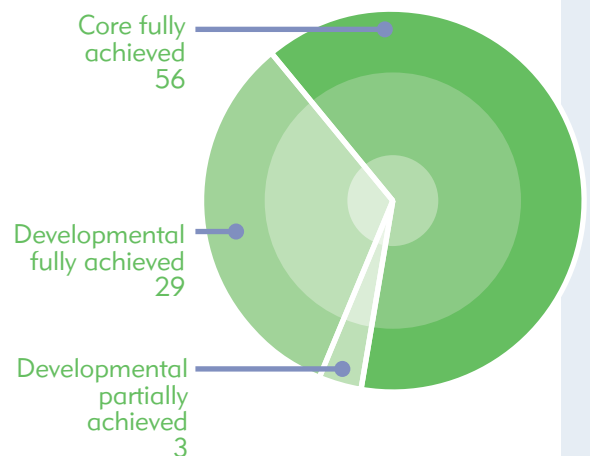


Governance

We have a number of external and internal groups who monitor our performance.

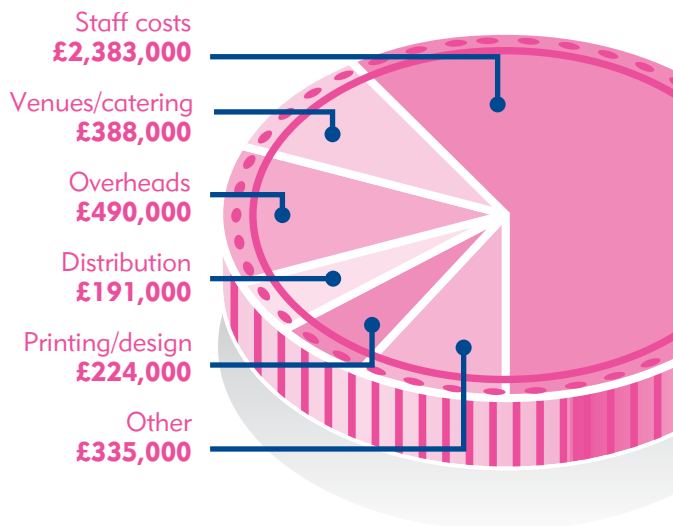


Strategic targets



Finance

Total expenditure
£4,011,000



Technology supported learning

8,869,240

page views on CPPE website

1,183,839

website sessions*

122,764

online learning activities

39,268

attempts at our e-challenge quiz

39,083

Declaration of Competence statements **downloaded**

35 NEW LEARNING PROGRAMMES

Topics include:

- Asthma
- Care homes
- Clinical medication review
- Consultation skills
- Epilepsy
- Influenza
- Learning disabilities
- Medicines reconciliation
- Type 2 diabetes
- Urgent care

Events and activities



Most popular learning programmes (by format)

- A** Safeguarding children and vulnerable adults - Level 2 (e-assessment)
- E** Safeguarding children and vulnerable adults (e-learning)
- W** Epilepsy focal point (workshop)
- D** Urgent care: a focus for pharmacy (distance learning download)
- G** MURs: preparing to become accredited (guide)
- EC** General practice - the fundamentals of working with GPs (e-course)

General practice pharmacist training pathway (GPPTP)



18 month programme

Training **469** pharmacists

23 participant-facing team members across England (national lead, deputy leads and education supervisors)

Social media

8,012
page likes on **Facebook**

5,730
followers on **Twitter**

2,523
followers on **LinkedIn**

theLearningpharmacy.com™



25,430
sessions*

68.7 percent
of sessions by new visitors

31.3 percent
by returning visitors

*A session is a group of interactions that take place on a website within a given time frame. A single session may contain multiple screen or page views, events, social interactions, and e-commerce transactions. A session ends after 30 minutes of inactivity and if an individual comes back after that a new session is started.

Contacting CPPE

Please contact us by email or telephone. A member of our customer services team will be happy to help you with your enquiry.

Email: info@cppe.ac.uk Telephone: 0161 778 4000 Website: www.cppe.ac.uk